

Cabbage Tree Creek Paddle

Cabbage Tree Creek Paddle



Start Time 08:00 Finish 12:00 or 13:00 (tide and participant needs)

This is a shorter trip suitable for a Sunday before clean-up back at Brownsea.

Key Points

- Activity starts and finishes at Brownsea (89 Allpass Parade)
- Make sure everyone is aware of what to bring for a water activity using the "What to bring to Brownsea" document. We won't take adults who turn up in thongs.
- Use of Kayaks or Canoes is at the discretion of the Leader in Charge and is dependent on skillsets and rations. Generally, Kayaks are for older Scouts and above.
- Morning tea may be taken in canoes (or driven to Curlew Park). Due to the high e-coli load we encourage something to wash hands with before eating.
- Groups staying overnight typically want to be back for lunch. Groups joining us for the day can work on OAS (Capsizing etc back at Brownsea)
- We do not swim, deliberately capsize, or splash each other as the E-Coli count is high in Cabbage Tree Creek. The Runoff is from Chermside and we pass a sewerage outlet along the way

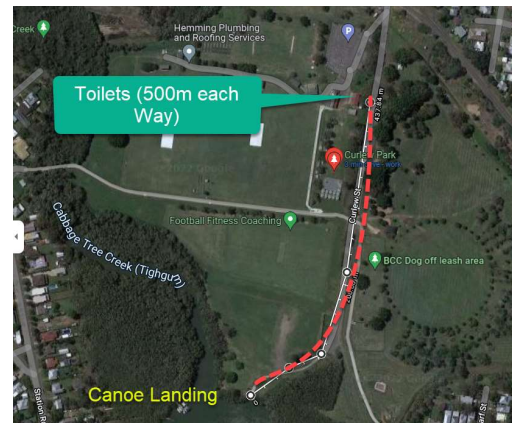


Turnaround @ Curlew Park (2km each way)

- Canoe past a Haunted House
- Weave through Trawlers
- Treasure Hunt in the Park (Optional your setup)
- Games in the Park(Optional)

Toilets @Curlew Park

Toilets at Curlew Park are 500m away. We encourage taking youth when we first disembark.



Turnaround @ the Trainline (4.4km each way)

Start Time 08:00 Finish 13:00 (tide dependant). Note most groups make it to Curlew Park only

- Paddle under the train lines and the road and wait for the bridge to shake as trains ride over
- Trains generally pass each other on the quarter past and quarter to the hour. Two often pass close to each other.

Day Program

8:00 Arrive Brownsea Ready for Safety Briefings

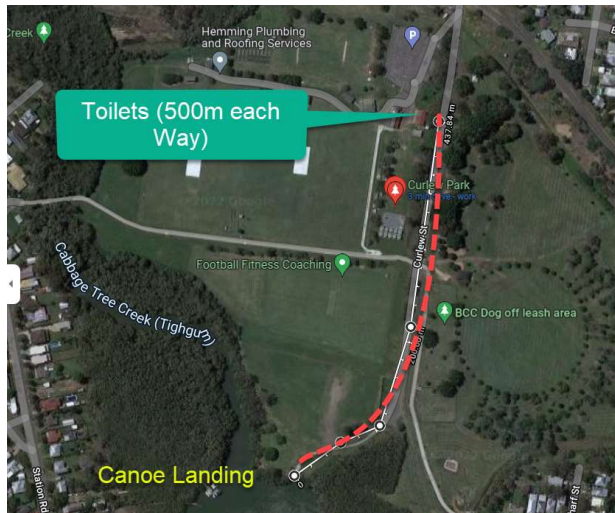
- Help check sunscreen hats water bottles
- Keep youth out of the carpark and traffic
- Get any food for lunch into the hands of an adult who may be driving to Curlew Park
- The Safety Briefing and Canoe Instruction is for all participants, not just youth**



Canoe Nudgee Activity

8:30 – 9:00 On the water

10:00 Morning Tea Curlew Park



10:30 Return or Continue to Trainline

11:00 to 12:00 Return Brownsea, Clean up Paddles, Lifejackets and Paddles

If time allows capsizing drills and other OAS components can be done at Brownsea on the return



13:00 Activity Finish once everything is cleaned up and put away

Maps

